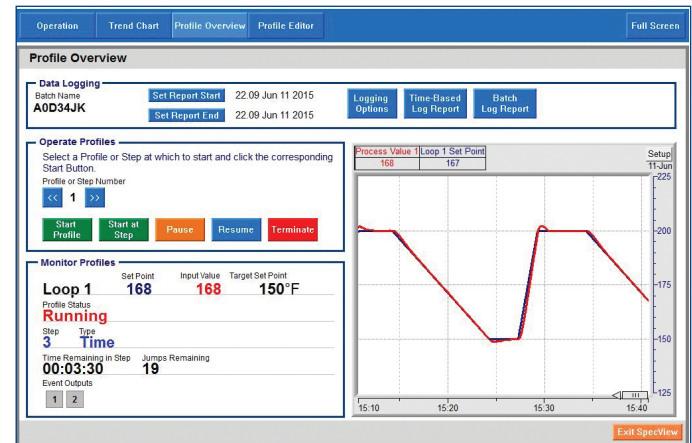


Easy-to-Use SCADA Software Saves Time by Creating Useful Interfaces in Minutes



SpecView is easy-to-use Supervisory Control and Data Acquisition (SCADA) software for Watlow® controllers, including the F4T with INTUITION® process controller and EZ-ZONE® controllers as well as third-party products. Watlow's single point of support for hardware, software and application needs ensures knowledgeable and prompt responses to questions or concerns.

This competitively priced package includes field-proven features, many suggested by loyal users. Built-in support and auto-detect for Watlow controllers make setup quick and simple. SpecView is ideal for industrial applications with support for barcode readers and touch-screen operation.

To try before purchasing, download SpecView from the Watlow website and run in the time-limited demo mode.

Features and Benefits

Built-in support and auto-detect for controllers

- Saves set-up time
- Eliminates the need to learn communications protocols
- Integrates devices from multiple vendors

Watlow EZ-ZONE standard bus communications protocol

- Communicates with any EZ-ZONE product without requiring purchase of a communications option

Highly configurable trending/graphing

- Simplifies monitoring and troubleshooting processes and machines
- Provides a permanent, unalterable record of results

Flexible data logging and report generator

- Helps users comply with regulatory requirements including AMS 2750D NADCAP
- Reduces labor and increases accuracy by automating data collection
- Simplifies record keeping by consolidating measurements, operator comments and other information into Excel® - compatible report formats
- Allows data to be grouped in user-defined batches
- Records operator actions

Features and Benefits (con't)

Easy-to-build, customizable screens

- Allows creation of application-specific screens, which can automate tasks, decrease training time and simplify monitoring and operation
- Highlights specific parameter values with user-set color dynamics and provides bar graphs for "at-a-glance" monitoring
- Limits access with passwords, if desired

Easy-to-use recipe manager

- Saves snapshot of current parameter settings
- Eliminates operator error when setting machine parameters
- Reviews and edits complex ramp and soak profiles

Historical replay option

- Helps troubleshoot processes by allowing review of recorded data

Remote access option

- Allows multiple, identical operator stations for convenient access
- Reduces downtime and increases utilization with monitoring and access over LAN, modem or Internet

Your Authorized Watlow Distributor is:



Watt Solutions

Thermal Systems ... Embracing Complexity

Contact Sales

phone: (602) 373-9663

email: sales@watt.solutions (no .com)

website: <http://www.watt.solutions/>

System Requirements

Compatible Operating Systems:

- Windows® 10, 8.1, 8, 7, Vista, Server 2003 and XP

Minimum System:

- Pentium® processor or equivalent AMD
- 1GB RAM (2GB recommended)
- 100MB hard disk space to install SpecView
- Additional disk space for data logging
- Instrument connection: serial port or Ethernet
- USB port for the key

Ideal System:

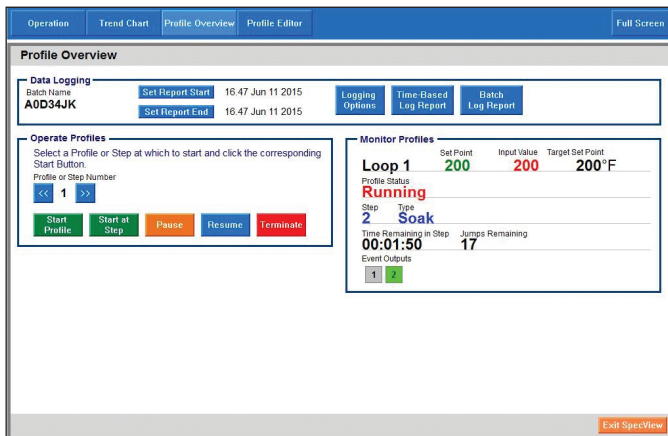
- Intel® Core™ i5 2.6Ghz processor or AMD equivalent
- 2GB RAM
- 500GB hard disk plus enough space for data logging

Supported Controllers and Protocols

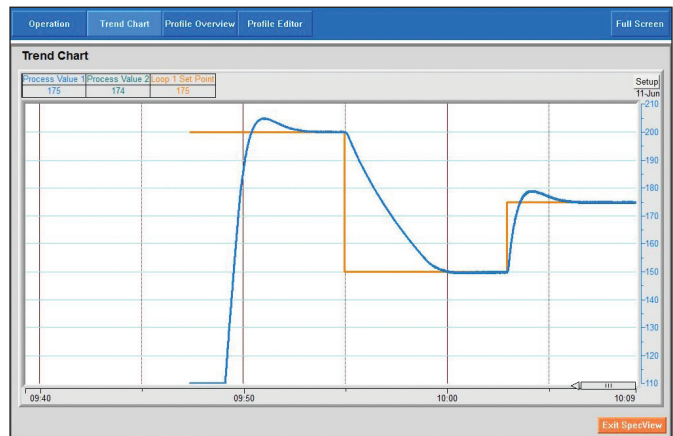
Controller	Controller's Communication Protocol		
	Standard Bus	Modbus® RTU	Modbus® TCP
F4T with INTUITION	N/A	✓	✓
EZ-ZONE RM, PM and ST	✓	✓ ^①	✓ ^①
SERIES F4 Ramping	N/A	✓	N/A
SERIES 96, 97, SD	N/A	✓	N/A
POWER SERIES	N/A	✓	N/A
MICRODIN	N/A	✓	N/A
SERIES 986, 987, 988, 989	N/A	✓	N/A
CLS200 (standard or ramp/soak)	N/A	✓	N/A
MLS300 (standard or ramp/soak)	N/A	✓	N/A

① Modbus® support for basic operation parameters is included. Automatic detection of EZ-ZONE instruments is not available via Modbus® so configurations must be set up manually. EZ-ZONE ST controllers versions 1 to 3 are supported via Modbus® with a RUI Gateway only.

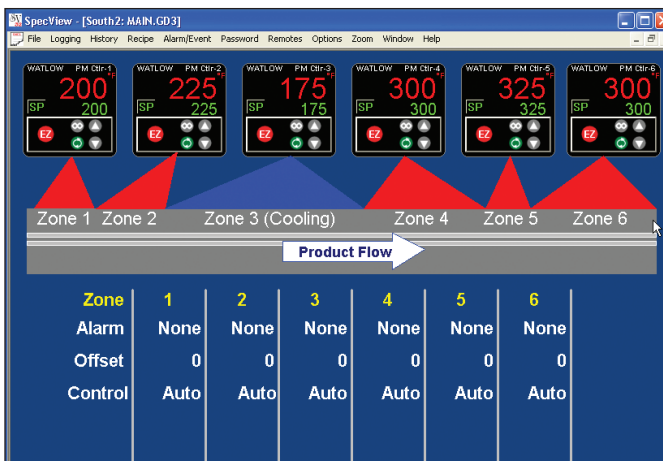
Application Examples



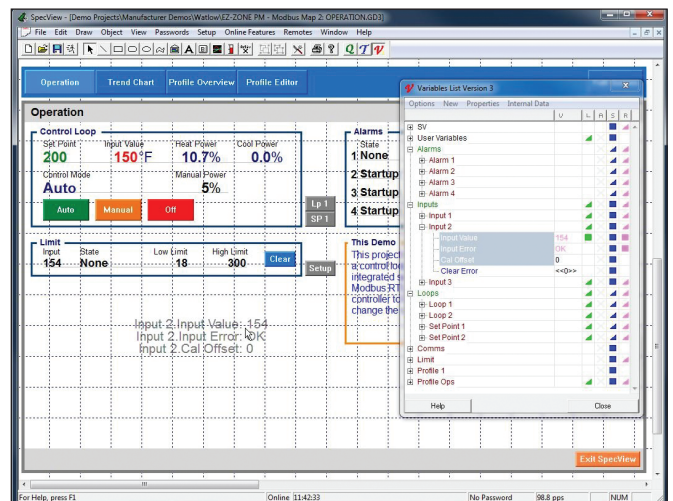
Track and report batch-specific processing data.



Graph and log process data. Replay data that may have been missed while a user was away. For playback of data older than four hours get the historical replay option.



Create application-specific screens that depict process data so users can relate.



Make screens with drag-and-drop ease.

Ordering Information - Standard

Part Number

① ②	③	④	⑤	⑥	⑦	⑧ ⑨	⑩	⑪	⑫	⑬
SV	Version	Ports	Historical Replay & Strategy Cont.	DDE and OPC	ActiveX Container	Remote Users	Special Watlow Drivers	Third-Party Drivers	Update Plan	0

③	Version
S =	Standard
④	Ports
S =	Single
M =	Multiple
⑤	Historical Replay and Strategy Controller
0 =	None
H =	Historical replay
S =	Strategy controller
B =	Both historical replay and strategy controller
⑥	DDE and OPC
0 =	None
D =	DDE
C =	OPC client
B =	Both DDE and OPC client
⑦	ActiveX Container
0 =	None
A =	ActiveX container

⑧ ⑨	Remote Users
00 =	None
XX =	Number of simultaneous remote users (01 to 99)
⑩	Special Watlow Drivers
0 =	None
1 =	SERIES F4 programmer
⑪	Third-Party Drivers
0 =	None
1 =	Allen-Bradley® DF1
Note: Special drivers for other third-party products (Honeywell®, Eurotherm®, Mitsubishi®, Yokogawa® and Marathon) are available directly from SpecView.	
⑫	Update Plan
0 =	One year of free updates
5 =	Five additional years of updates (six years total)

Ordering Information - Mini

Part Number

① ②	③	④	⑤	⑥	⑦	⑧ ⑨	⑩	⑪	⑫	⑬
SV	Version	Ports	Historical Replay & Strategy Cont.	DDE and OPC	ActiveX Container	Remote Users	Special Watlow Drivers	Third-Party Drivers	Update Plan	0

③	Version
M =	Mini (limited to two instrument views)
Note: The mini version is limited to two instrument views and may not be appropriate for use with some devices such as profiling and multi-loop controllers where a single device appears as multiple instruments in SpecView.	
④	Ports
S =	Single
M =	Multiple
⑤	Historical Replay and Strategy Controller
H =	Historical replay
B =	Both historical replay and strategy controller
⑥	DDE and OPC
0 =	None
D =	DDE
C =	OPC client
B =	Both DDE and OPC client

⑦	ActiveX Container
0 =	None
A =	ActiveX container
⑧ ⑨	Remote Users
00 =	None
XX =	Number of simultaneous remote users (01 to 99)
⑩	Special Watlow Drivers
0 =	None
1 =	SERIES F4 programmer
⑪	Third-Party Drivers
0 =	None
1 =	Allen-Bradley® DF1
Note: Special drivers for other third-party products (Honeywell®, Eurotherm®, Mitsubishi®, Yokogawa® and Marathon) are available directly from SpecView.	
⑫	Update Plan
0 =	One year of free updates
5 =	Five additional years of updates (six years total)

Ordering Information - Upgrade

Part Number

① ②	③	④	⑤	⑥	⑦	⑧ ⑨	⑩	⑪	⑫	⑬
SV	Version	Ports	Historical Replay & Strategy Cont.	DDE and OPC	ActiveX Container	Remote Users	Special Watlow Drivers	Third-Party Drivers	Extend or Restart Update Plan	0

③	Version
U =	No version change; upgrade options only
N =	Upgrade mini to standard

④	Ports
0 =	No upgrade
M =	Multiple

⑤	Historical Replay and Strategy Controller
0 =	No upgrade
H =	Historical replay (already included with SpecView Mini)
S =	Strategy controller
B =	Both (do not order this option with SpecView Mini)

⑥	DDE and OPC
0 =	No upgrade
D =	DDE
C =	OPC client
B =	Both DDE and OPC client

⑦	ActiveX Container
0 =	No upgrade
A =	ActiveX container

Note: Your upgrade order must be accompanied by the Step 1 code from the upgrade screen in SpecView. Use the upgrade order form available at www.watlow.com or upon request from Watlow or your authorized distributor.

⑧ ⑨	Remote Users
00 =	No upgrade
XX =	Number of simultaneous remote users (01 to 99)

⑩	Special Watlow Drivers
0 =	No upgrade
1 =	SERIES F4 programmer

⑪	Third-Party Drivers
0 =	No upgrade
1 =	Allen-Bradley® DF1

Note: Special drivers for other third-party products (Honeywell®, Eurotherm®, Mitsubishi®, Yokogawa® and Marathon) are available directly from SpecView.

⑫	Extend or Restart Update Plan
0 =	No additional updates
2 =	Extend update plan by two years. Note: Valid only prior to expiration of the update plan.
5 =	Extend update plan by five years. Note: Valid only prior to expiration of the update plan.
U =	Start a new two-year update plan. Note: Select this option to update SpecView after its update plan has expired.
A =	Start a new two-year update plan. Note: Valid one time only when upgrading from version 2.5 to version 3.

How to Choose the Correct SpecView Options

Order this option....	If you want to....
Mini Version	Operate a system with data from one or two simple instruments. This option includes historical replay and allows up to two instruments. Note that in some cases, devices such as profiling and multi-loop controllers are represented by more than one instrument, the mini version may not be appropriate.
Standard Version	Be free to expand configurations beyond the two instrument limit of the mini version.
Single Port	Communicate with instruments on only one serial communications port or via Ethernet only.
Multiple Port	Communicate with instruments on more than one serial communications port and via Ethernet.
Historical Replay	Replay logged data on screens in trends, bar graphs and numeric fields. Without the option, replay is limited to the last four hours of data.
Strategy Controller	Configure SpecView to respond automatically to events such as specific parameter values with actions such as printing the screen, starting logging or downloading a recipe. Events can also be time or calendar based. Without the strategy controller option there is a two event limit.
DDE	Integrate SpecView with other Windows® programs.
OPC Client	Connect SpecView to instruments via a third-party OPC server.
ActiveX® Container	Integrate third-party or customer-written ActiveX® controls into SpecView.
Remote Users	Monitor instruments from multiple computers simultaneously. Order the number of remote users corresponding to the maximum number of additional computers needed to connect simultaneously.
SERIES F4 Programmer Driver	Use the computer to manage profiles: program profiles in the computer, save profiles on the computer or download profiles that are saved on the computer to the SERIES F4.
Allen-Bradley® DF1 Driver	Connect to Allen-Bradley® PLCs (programmable logic controllers) that support the DF1 protocol.
Update Plan	SpecView includes one year of free updates with an option for five additional years. The update period may be extended or restarted with field upgrade options.

Powered by Possibility

To be automatically connected to the nearest North American Technical Sales Office:

1-800-WATLOW2 • www.watlow.com
inquiry@watlow.com

International Technical Sales Offices:

Austria	+43 6244 20129 0	India	+91 40 6661 2700
Australia	+61 3 9335 6449	Italy	+39 02 4588841
China	+86 21 3532 8532	Japan	+81 3 3518 6630
France	+33 (0) 1 41 32 79 70	Korea	+82 2 2169 2600

Mexico	+52 442 256 2200
Singapore	+65 6773 9488
Spain	+34 91 675 1292
Taiwan	+886 7 288 5168
UK	+44 (0) 115 964 0777